



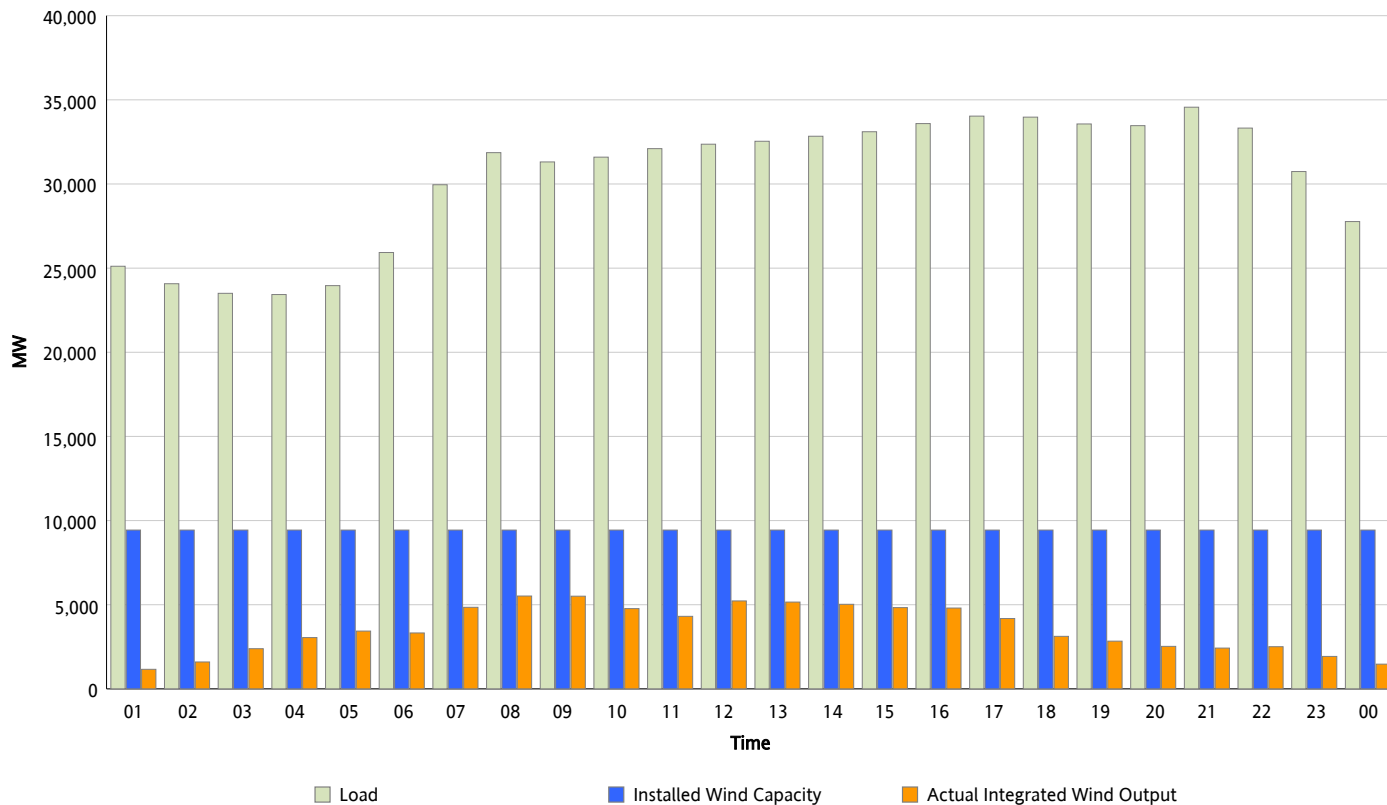
ERCOT Grid Operations

Wind Integration Report : 03/22/2012

Peak Load	34,562 MW
Load Peak Hour (HE)	21
Wind Over Peak	2,424 MW
Wind Record 03/18/12	7,917 MW
Max Wind Value*	5,747 MW
Wind Peak Time	08:08
Wind Integration %	18.33 %

Hourly Average Actual Load vs. Actual Wind Output

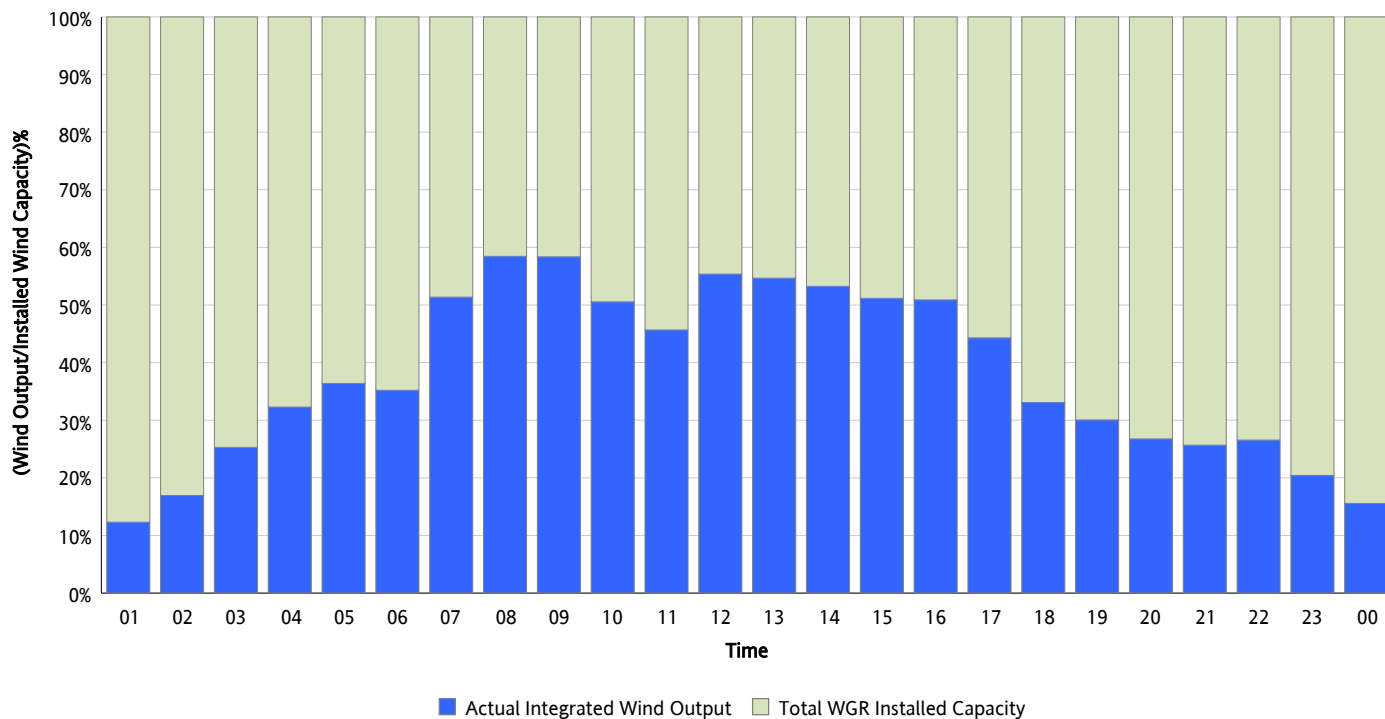
03/22/2012



* Wind Record and Wind Max represent instantaneous values and the rest of the values are integrated over the hour

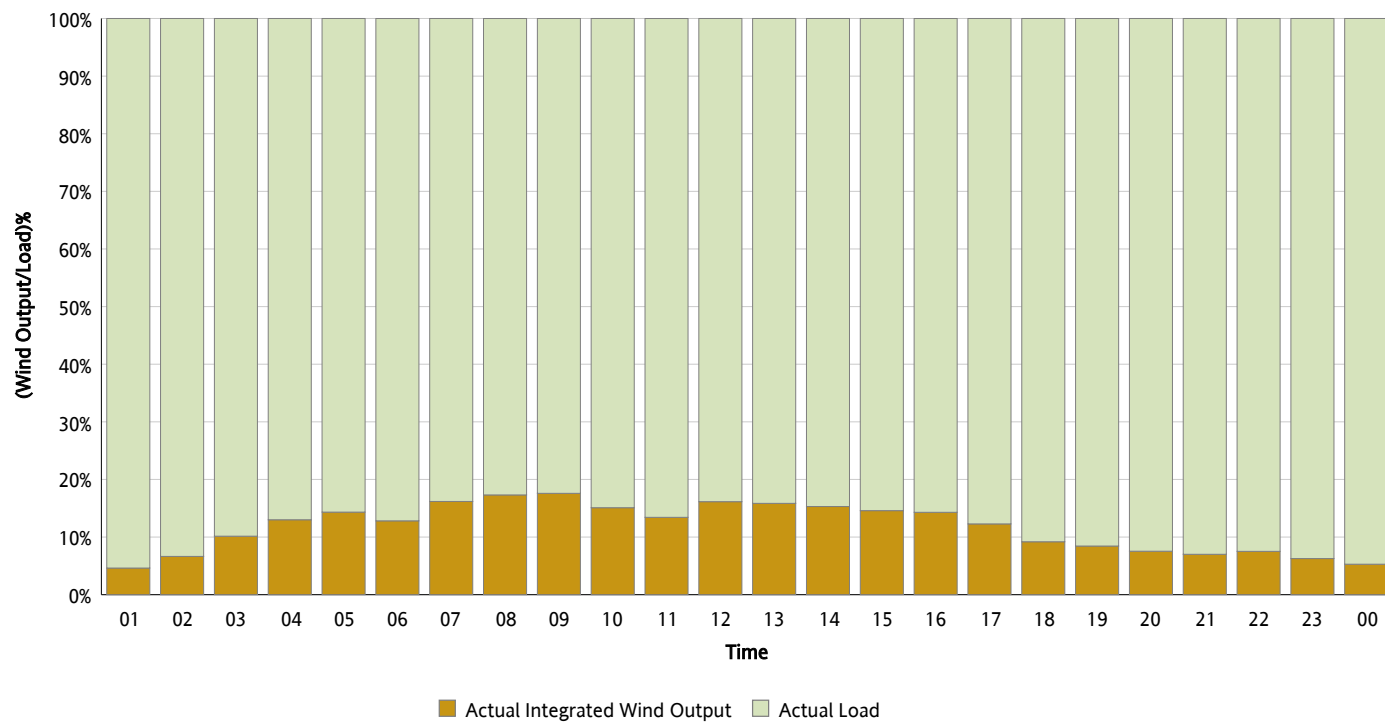
Actual Wind Output as a Percentage of the Total Installed Wind Capacity

03/22/2012



Actual Wind Output as a Percentage of the ERCOT Load

03/22/2012



ERCOT Load vs. Actual Wind Output

03/15/2012 - 03/22/2012

